

---

# Table of Contents

## Introduction to BMW

Subject	Page
<b>BMW Model Identification</b> .....	<b>4</b>
External Designations .....	4
Internal Designations .....	5
Vehicle Identification Numbers .....	26
<b>Paint Code Identification</b> .....	<b>29</b>
<b>Engine Identification</b> .....	<b>30</b>
Engine Numbering System .....	31
Engine Displacement Identification .....	32
Engine Specification Plate Locations .....	33
<b>Transmission Identification</b> .....	<b>34</b>
Automatic Transmissions .....	35
Zahnradfabrik Friedrichshafen (ZF) .....	35
GM Hydramatic .....	36
Manual Transmissions .....	37
Transmission Data Plate .....	38
ZF Tag Location .....	38
GM Tag Location .....	38
<b>BMW Group Numbering System</b> .....	<b>39</b>
<b>BMW Abbreviations and Acronyms</b> .....	<b>40</b>

**BLANK  
PAGE**

---

# Introduction to BMW

**Model: All**

**Production: All**

# OBJECTIVES

After completion of this module you will be able to:

- Identify BMW models by their internal and external designations
- Be able to decipher a VIN
- Identify BMW engines and transmissions
- Understand the BMW Group Numbering system
- Recognize acronyms utilized internally by BMW

# BMW Model Identification

BMW uses two different methods of identifying its products:

- External Designations are for customers to identify BMW products. These are marketing designations commonly referred to as trunk badges.
- Internal Designations are used by BMW and center personnel to identify a particular production version.

## External Designations

External designations located on the trunk or tailgate are the model names. Customers and the public identify BMW products by these names.



The trunk badges consist of a combination of numbers and letters. The badge shown is typical of 3, 5, and 7 series vehicles. The first digit represents the series identification. The last two digits mark the engine displacement. The i represents the type of fuel delivery (injected).

The external designations are created by the sales and marketing department to position each model in a certain target segment of the vehicle sales market.

Occasionally there are examples where the actual engine displacement does not match the designation. This is a marketing decision to continue familiar name recognition from one version to the next and to create a spacing between models. Examples are:

- 1996-2001 740i - 4.4 liter
- All 323i - 2.5 liter
- 2005 750i/Li - 4.8 liter



There is another series of badges that begin with a letter followed by a single digit. These are found on:

- Roadsters (E36/7, E52, E85)
- SAV (E53, E83)
- Motorsport



Additional letters sometime follow the badge numbers and are used to further identify each model. Examples include:

- |                            |                            |              |
|----------------------------|----------------------------|--------------|
| • C or c - Coupe or Cabrio | • i - Fuel Injected        | • s - sport  |
| • L - long wheel base      | • M - Motorsport           | • e - etta   |
| • x - all-wheel drive      | • t - touring/sports wagon | • d - Diesel |

## Internal Designations

Internal designations are created and used by the Engineering and Technical Development departments to identify a new model during the design of the car. The use of the internal designations carries over to the Technical Support groups after production.

Internal designations refer to the entire vehicle series of a particular body design. For example, the E46 designation describes all 3 series cars of that design. BMW products start with an “E” and are followed by a two digit number. Not all design concepts make production, so internal designations are usually not sequential. Table 1.1 lists the internal designations, series number and the years produced.

The E designations can include an additional number separated by a slash (/) to indicate a different model within a particular chassis group. Example:

- E36/7- Z3
- E46/3- Sport Wagon
- E46/16- All-Wheel Drive
- E36/5- 318ti
- E46/2- Coupe

Engineering Designation	Series	Years Produced
E12	5	1975 - 1981
E21	3	1977 - 1983
E23	7	1978 - 1987
E24	6	1977 - 1989
E28	5	1982 - 1988
E30	3	1984 - 1991
E31	8	1991 - 1997
E32	7	1988 - 1994
E34	5	1989 - 1995
E36	3	1992 - 1999
E38	7	1995 - 2001
E39	5	1997 - 2003
E46	3	1999 - 2006
E52	8	2001 - 2003
E53	5 SAV	2000 - 2006
E65/66	7	2002 -
E60/61	5	2003 -
E63/64	6	2003 -
E70	5 SAV	2007 -
E83	3 SAV	2005 -
E85/86	Roadster	2003 -
E90/91	3	2006 -
E92/93	3	2007 -

Please refer to the BMW Technical Information Card for more information on model designations.

# 1 Series



## E82

2008 -

128i

2008 -

135i

2008 -



## E88

2008 -

128i

2008 -

135i

2008 -

# 3 Series



## E21

1977-1983

320i                      1977 - 1983



## E30

1984-1993

318i                      1984 - 1985  
                                 1991 - 1992

325e                      1985 - 1988

325i                      1987 - 1993



## E36

1992-1999

318i                      1992-1996

325i                      1992-1995

323i                      1998-1999

328i                      1996-1999



## E46

1999-2006

323i	1999-2000
325i	2001-2006
328i	1999-2001
330i	2001- 2006
M3	2002 - 2006



## E90

2006 -

325i	2006 - 2007
330i	2006 - 2007
325xi	2006 - 2007
330xi	2006 - 2007
328i	2007 -
335i	2007 -
328xi	2007 -
335xi	2007 -



## E92

2007 -

328i	2007 -
335i	2007 -
328xi	2007 -
335xi	2007 -





**E93**

2007 -

328i

335i

2007 -

2007 -



## 5 Series



### E12

1975-1981

530i	1975 - 1978
528i	1979 - 1981



### E28

1982-1988

528e	1982 - 1988
533i	1983 - 1984
535i	1985 - 1988
524td	1985 - 1986



### E34

1988-1995

525i	1989-1995
530i	1994-1995
540i	1994-1995

## E39

1997-2002

525i	2001
528i	1997 - 2000
530i	2001 - 2003
540i	1997 - 2003



## E60

2004 -

525i	2004 - 2007
530i	2004 - 2007
545i	2004 - 2007
550i	2006 -
525xi	2006 - 2007
530xi	2006 - 2007
528i	2008 -
535i	2008 -
535xi	2008 -



# 6 Series



## E24

1977-1989

630CSi	1977
633CSi	1978 - 1984
635CSi	1985 - 1989
L6	1987



## E63/64

2003 -

645Ci	2004 - 2005
650Ci	2006 -
645Cic	2004 - 2005
650Cic	2006 -



## 7 Series



### E23

1978-1987

733i 1978 - 1984

735i 1985 - 1987

L7 1986 - 1987



### E32

1988-1994

735i 1988-1991

740i 1992-1994

750iL 1988-1994



### E38

1995-2001

740i 1995-2001

750iL 1995-2001

**E65**

2002 - 2008

745i                    2002 - 2005

750i                    2006 - 2008

760i                    2005 - 2008



**E66**

2002 - 2008

745Li                   2002 - 2005

750Li                   2006 - 2008

760Li                   2003 - 2008



**F01**

2009 -

## 8 Series



### E31

1990-1997

840Ci                    1994 - 1997

850i                     1991 - 1994

850Ci                  1995 - 1997

850CSi                1994 - 1995



### E52

2001-2003

Z8                        2001 - 2003

Alpina Z8              2003



## Touring - Sports Wagon



### **E36/5**

1995-1999

318 ti                      1995 - 1999



### **E46**

2000 - 2003

323iT                      2000

325iT                      2001 - 2005

325xiT                     2001 - 2005



### **E91**

2006 -

325xiT                     2006

328xiT                     2007 -

328iT                      2007 -

### **E34**

1992-1995

525iT                    1992 - 1995

530iT                    1994 - 1995



### **E39**

2001 - 2003

528iT                    1999 - 2000

525iT                    2001 - 2003

540iT                    1999 - 2003



### **E61**

2006 -

530xiT                    2006 - 2007

535xiT                    2008 -



# Z Series



## E36/7 Z3

1996-2002	
Z3 1.9	1996 - 1998
Z3 2.3	1999 - 2002
Z3 2.8	1997 - 2000
Z3 3.0	2001- 2002
Z3 Coupe 2.8	1999 - 2000
Z3 Coupe 3.0	2001 - 2002
M Roadster	1998 - 2002
M Coupe	1999 - 2002



## E85 Z4

2003 -	
Z4 2.5	2003 - 2005
Z4 3.0	2003 - 2005
Z4 3.0i	2006
Z4 3.0si	2006
Z4 Coupe	2006 -
M Roadster	2006 -
M Coupe	2006 -



## E52

2001- 2003	
Z8	2001 - 2003
Alpina Z8	2003



# X Series



## E53 X5

2000-2006

X5 4.4i	2000 - 2006
X5 3.0i	2001 - 2006
X5 4.6is	2002 - 2003
X5 4.8is	2004 - 2006



## E83 X3

2004 -

X3 2.5i	2004 - 2005
X3 3.0i	2004 - 2007
X3 3.0si	2007 -



## E70 X5

2007-

X5 3.0si	2007 - 2008
X5 4.8i	2007 - 2008

**E71 X6**

2008 -

xDrive35i

2008 -

xDrive50i

2008 -



# Motorsport Series



**E26 M1**

1976-1981



**E30 M3**

1988-1992



**E36 M3**

1995-1999



**E46 M3**

2002 - 2006



**E9x M3**

2008 -

E90 2008 -

E92 2008 -

E93 2008 -



**E28 M5**

1988







### **E34 M5**

1991 - 1993



### **E39 M5**

2000 - 2003



### **E60 M5**

2006-

**E24 M6**

1987 - 1988



**E63 M6**

2007-



**E36/7 MRoadster**

1998 - 2002





### **E85 MRoadster**

2007 -



### **E36/7 MCoupe**

1999 - 2002



### **E86 MCoupe**

2007 -

## Vehicle Identification Numbers

Vehicle Identification Numbers are referred to as the VIN. BMW utilizes a VIN with a 17 character structure. The characters are grouped to include multiple information as follows:

**WBA BR33 4 4 Y E A82019**

Digit 1-3 are the **manufacturer's code**:

- WBA = BMW Cars and SAVs
- WBS = Motorsport
- 4US = Spartanburg (not used since 1999)

Digits 4-7 are the **model code**:

Digit 8 is the **restraint system identifier**:

- 0 = Seat belts
- 1 = Seat belts and Driver airbag
- 2 = Seat belts and Dual airbags
- 3 = Seat belts, Second generation dual front airbags
- 4 = Seat belts, Dual-stage advanced front airbags

Digit 9 is a **check digit** determined by VIN:

Digit 10 is the **model year identifier** (started in 1980):

A = 1980 model year, sequentially progresses every year. I, O, Q, U and Z are not used because they can be mistaken for numbers.

A=1980	G=1986	N=1992	W=1998	4=2004	A=2010
B=1981	H=1987	P=1993	X=1999	5=2005	B=2011
C=1982	J=1988	R=1994	Y=2000	6=2006	C=2012
D=1983	K=1989	S=1995	1=2001	7=2007	D=2013
E=1984	L=1990	T=1996	2=2002	8=2008	E=2014
F=1985	M=1991	V=1997	3=2003	9=2009	F=2015

Digit 11 is the **Plant code**:

- A, F, K = (Plant 1.1) Munich
- C, B, D, G = (Plant 2.4) Dingolfing
- E, J, P = (Plant 6.1) Regensburg
- L, M = (Plant 10) Spartanburg
- N = (Plant 9) Rosslyn
- W = (Plant) Graz, Austria
- V = (Plant) Leipzig

Digits 12-17 are the **Sequential production number**:



---

## VIN Location on Vehicle

The VIN is located on the vehicle in the following locations:

- Left lower corner of the instrument panel. This is viewed through the windshield from outside the vehicle.
- B pillar compliance label. On the drivers side door jamb.

Additionally the VIN is stamped into the chassis in one of two locations:

- Under the hood on right side of engine compartment bulkhead.
- Under the hood on right side shock tower.



## Vehicle Production Dates



The production date of the vehicle is included in the B pillar compliance label.

Production date information is required quite often when a repair procedure affects only a certain range of vehicles. The range is based on production dates.

The date shown on the label reflects the actual month and year the vehicle was produced. It is not a model year indicator.

## Vehicle Production Anti-Theft Labels

Since 1987, the National Highway Traffic Safety Administration (NHTSA) requires that the VIN be marked on specific parts of the car during manufacture for theft identification. Some models are exempt if the total number of vehicles imported is below a certain number.

If equipped, label it is also a reference point for the VIN. The label is placed on the following locations:

- Engine
- Hood
- Front bumper
- Front Fenders
- Quarter panels.
- Firewall
- Transmission
- Trunk lid
- Rear Bumper
- Doors
- Shock Tower



\*Please reference S.I.B 00 21 86 (1267) dated June 1990 for more information on Anti-theft labels.

## Paint Code Identification

When ordering painted parts it is necessary to obtain the vehicle's paint code. The paint code consists of a three digit number printed on the color identification tag as shown below. All color identification tags are located in the engine compartment.





# Engine Identification

BMW engines are identified by a combined alpha-numeric code. Like the internal model designation it is a code used by the Engineering and Technical development teams during the design stages of the engine:

- M - for standard production engines
- S - for Motorsport engines (Motorsport is a separate division of BMW)
- N -for New Generation engines
- P - for Prototype engines

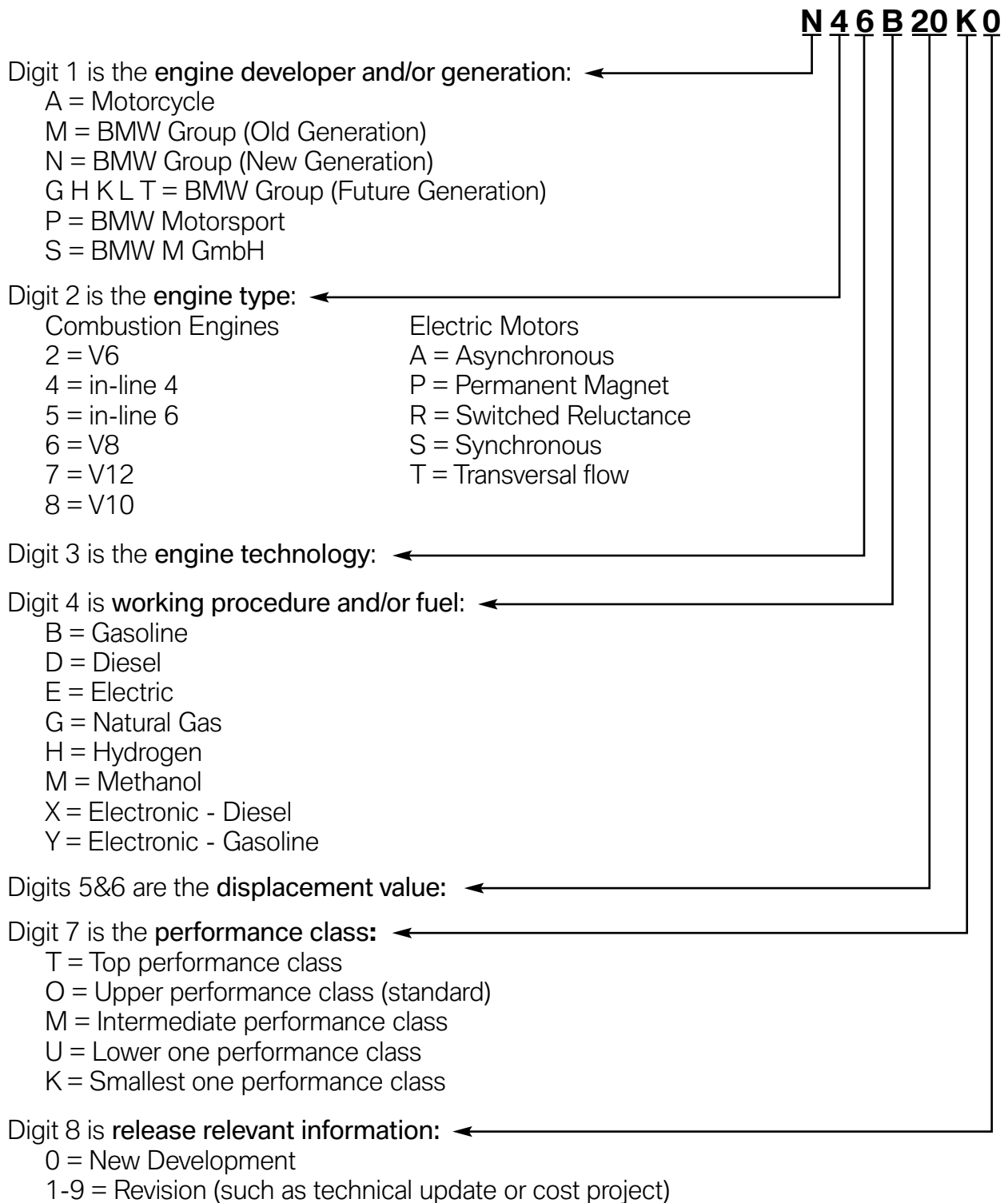
After the letter there are two digits that identify the engine. The table below lists engines by number of cylinders. Please refer to the BMW Technical Information Card for individual model application.

4 Cylinder	M10: 1.8 & 2.0L 2 valve inline	M42: 1.8L 4 valve inline	M44: 1.9L 4 valve inline	S14: 2.3L 4 valve inline				
6 Cylinder	M20: 2.5 & 2.7L 2 valve inline	M21: 2.4L 2 valve inline diesel turbo	M30: 2.8, 3.0, 3.2 3.4 & 3.5L 2 valve inline	M50: 2.5L 4 valve inline	M50TU: 2.5L 4 valve inline	M52 <sup>1</sup> : 2.5 & 2.8 L 4 valve inline	M52TU <sup>1</sup> : 2.5 & 2.8L 4 valve inline	M54 <sup>1</sup> : 2.5 & 3.0L 4 valve inline
	M57D30T2 <sup>1</sup> : 3.0L 4 valve inline diesel bi-turbo	N52(K) <sup>1</sup> : 3.0L 4 valve inline	N54 <sup>1 3</sup> : 3.0L 4 valve inline bi-turbo	S38: 3.5 & 3.6L 4 valve inline	S50: 3.0L 4 valve inline	S52 <sup>1</sup> : 3.2L 4 valve inline	S54: 3.2L 4 valve inline	
8 Cylinder	M60: 3.0 & 4.0L 4 valve V config.	M62: 4.4L 4 valve V config.	M62TU <sup>1</sup> : 4.4 & 4.6L 4 valve V config.	N62 <sup>1 2</sup> : 4.4L 4 valve V config.	N62TU <sup>1 2</sup> : 4.8L 4 valve V config.	N63 <sup>1 3</sup> : 4.4L 4 valve V config. bi-turbo reverse flow	S62 <sup>1</sup> : 5.0L 4 valve V config.	S65 <sup>1</sup> : 4.0L 4 valve V config.
10 Cylinder	S85 <sup>1</sup> : 5.0L 4 valve V config.							
12 Cylinder	M70: 5.0L 2 valve V config.	M73: 5.4L 2 valve V config.	M73TU: 5.4L 2 valve V config.	N73 <sup>1 2 3</sup> : 6.0L 4 valve V config.	S70: 5.6L 2 valve V config.			

**1** - VANOS: Variable Valve Timing. **2** - Valvetronic: Variable Valve Timing and Lift. **3** - Direct Injection

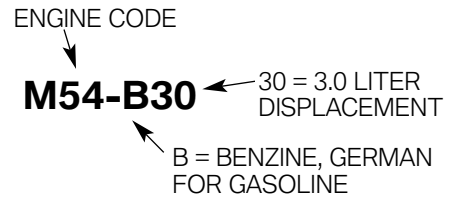
## Engine Numbering System

In order to organize and classify the engines developed by BMW, a numbering system has been developed.

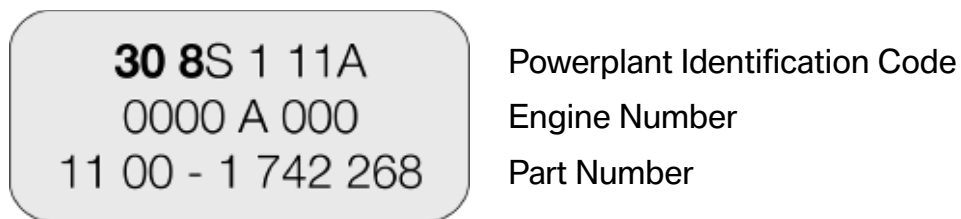


## Engine Displacement Identification

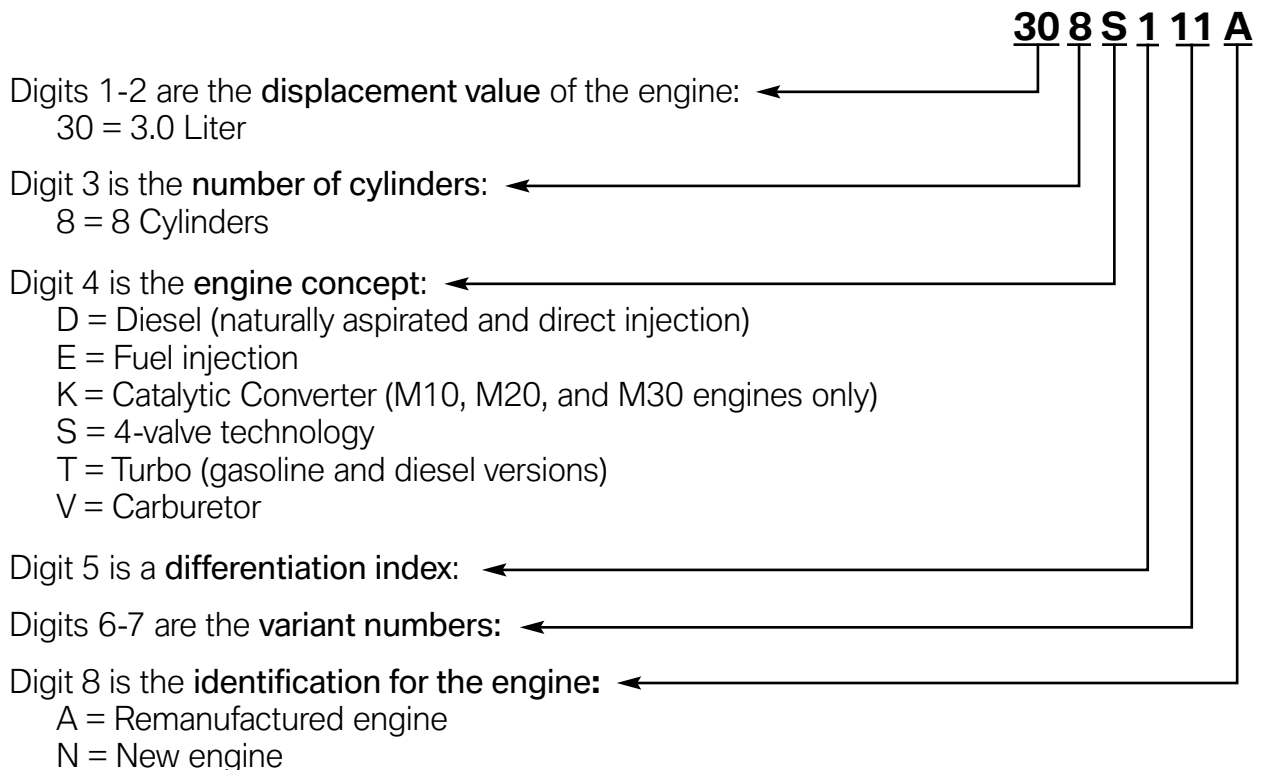
In technical literature usually only the group of 3 digits that follow the basic engine code is utilized for engine identification. These digits identify the required fuel type of the engine and its displacement.



Engine displacement can always be determined by the engine specification plate. This plate is stamped onto the engines in various locations. There is a lot of information included in this identification plate. The breakdown of the information on this plate is as follows:

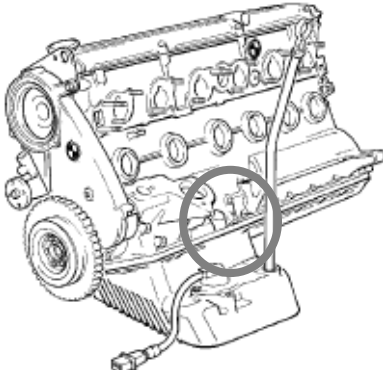


## Powerplant Identification Number

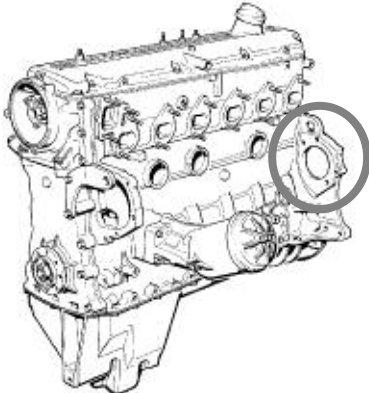


**Engine Specification Plate Locations**

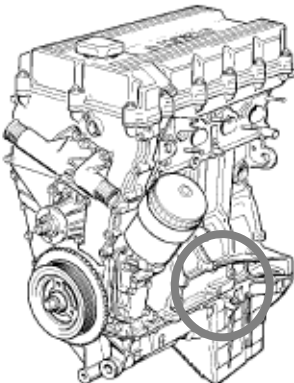
**M20**



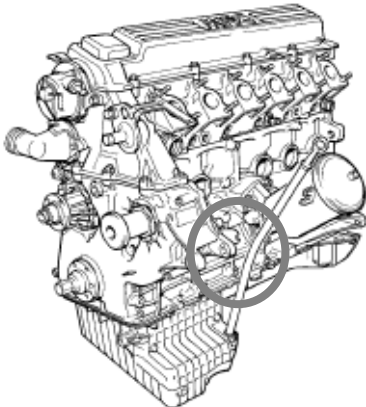
**M30**



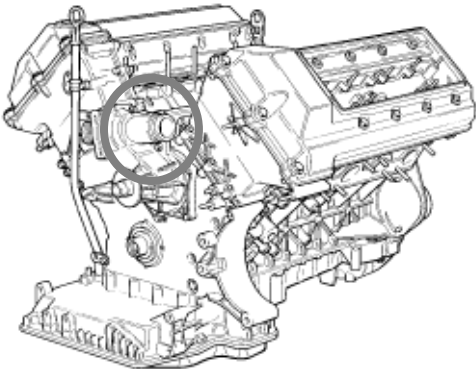
**M42  
M44**



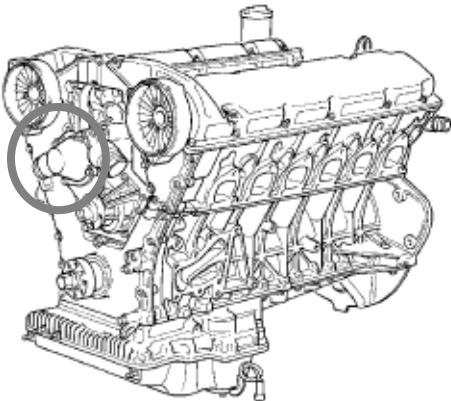
**M50  
M52  
M54  
N52  
S50  
S52  
S54**



**M60  
M62  
N62  
S62**



**M70  
M73  
S70**



# Transmission Identification

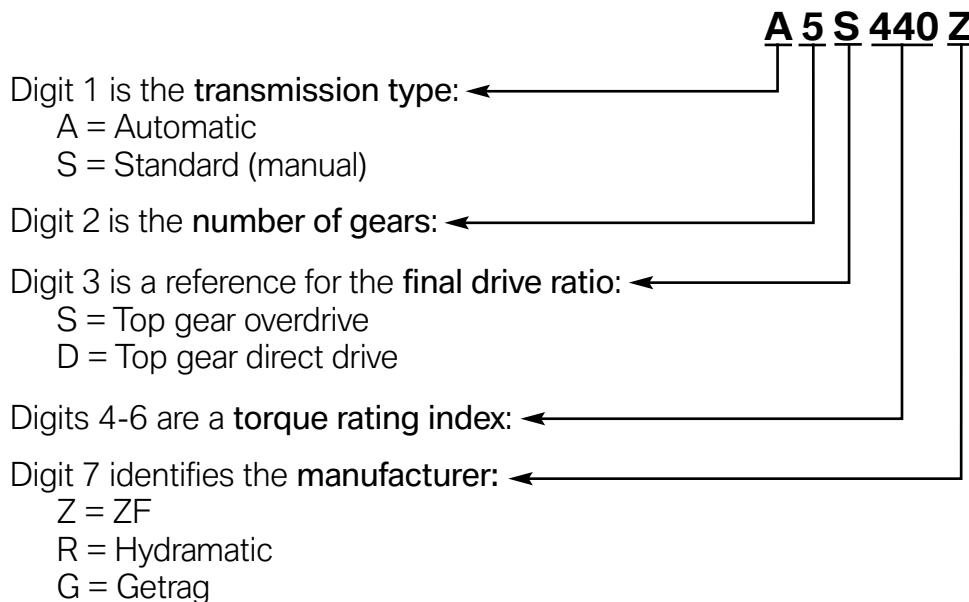
BMW uses three different transmission suppliers.

1. Zahnradfabrik Friedrichshafen: A German supplier of BMW transmissions. Commonly referred to as ZF. ZF manufactures both manual and automatic transmissions.
2. Getrag: A German supplier of BMW manual transmissions.
3. Hydramatic: A French supplier of BMW automatic transmissions. Hydramatic is a manufacturing division of General Motors Powertrain.

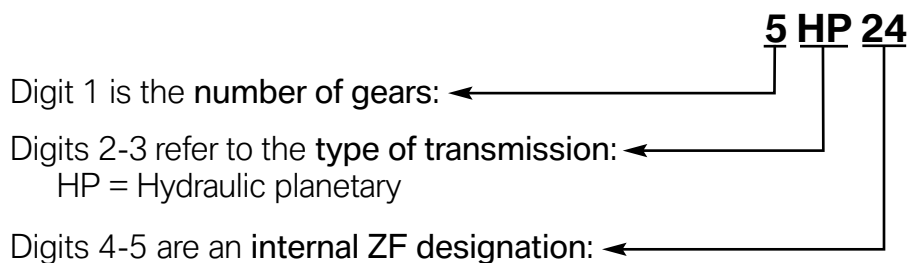
BMW has developed an internal numbering system for their transmissions for parts ordering, information research, and identification. Each manufacturer uses their own internal identification system.

The breakdown of the BMW transmission identification code is as follows:

## BMW Identification Code Breakdown



## ZF Identification Code Breakdown



## Automatic Transmissions

The tables on following three pages contain a list of automatic transmissions and the models they are used in.

<b>Zahnradfabrik Friedrichshafen (ZF)</b>			
<b>Transmission BMW ID #</b>	<b>Manufacturer ID</b>	<b>Model/Year</b>	<b>Engine</b>
<b>4HP22 (EH)</b>	<b>4HP22 (EH)</b>	86 535i 86 635i 86 735i	M30 M30 M30
<b>4HP24 (EH)</b>	<b>4HP24 (EH)</b>	88-9/91 750iL (E32) 92-94 750iL (E32) 90-94 850i/Ci (E31)	M70 M70 M70
<b>A5S310Z</b>	<b>5HP18</b>	93 530i/iT (E34) 94 530i/iT (E34) 95 M3 (E36) 96-99 M3 (E36)	M60 M60 S50 (US) S52
<b>A5S325Z</b>	<b>5HP19</b>	00 323i/Ci/CiC (3/00-8/00) 01 323iT (from 4/01) 01-04 325i/Ci/CiC to end of 04 02-05 325i SULEV (E46) 02- 06 325Ci SULEV (E46) 00-04 330i/Ci/CiC to end of 04 01- 03 525i/xi/xiT 3/01 to 9/03 01- 03 530i/xi/xiT3/01 to 3/03 03-05 Z4 (E85) 2.5i and 3.0i	M52 TU M52 TU M54 M56 M56 M54 M54-N52 M54-N52 M54
<b>A5S440Z</b>	<b>5HP24</b>	97 840Ci (E31) from 9/96 97 540i (E39) 1/97-8/97 97 740i/iL (1/97 - 4/97) 97 740i/iL (5/97-8/97) 98-03 540i 98-01 740i/iL 00- X5 4.4i (E53)	M62 M62 M62 M62 M62, M62 TU 99-02 M62, M62 TU 99-01 M62TU
<b>A5S560Z</b>	<b>5HP30</b>	93-94 740i/iL (E32) 93 540i (E34) 94-95 540i (E34) 94-95 840Ci (E31) 95 740i/iL (E38) 95-01 750iL (E38) 96-97 740i/iL ( -1/97) 96 840Ci (E31) 95-97 850Ci	M60 M60 M60 M60 M60 M73/M73TU M62 M62 M73

## Zahnradfabrik Friedrichshafen (ZF)

Transmission BMW ID #	Manufacturer ID	Model/Year	Engine
<b>GA6HP26Z</b>	<b>6HP26</b>	02-04 745i/Li (E65/E66) 05-08 750i/Li (E65/E66) 03- 760Li (E65/E66)) 03-3/07 545i/550i (E60) 03-9/06 X5 4.4/4.8iS (E53)	N62 N62/N62TU N73 N62/N62TU N62/N62S
<b>GA6HP28Z</b>	<b>6HP26TU</b>	3/07 545i/550i (E60) 9/07 645Ci/CiC (E63/E64) 9/07 650Ci/CiC (E63/E64) 10/06 X5 4.8i (E70) 9/08 X5 xDrive35d (E70) 1/08 X6 XDrive50i 4.4 (E71)	N62/N62/TU N62/N62/TU N62/N62/TU N62TU N57 N63
<b>GA6HP19Z</b>	<b>6HP19</b>	05-9/06 325i/xi (E90/E91) 05-9/06 330i/xi (E90) 06 Z4 3.0i/si (E85) 06 Z4 3.0i/si Coupe (E86)	N52 N52 N52 N52
<b>GA6HP21Z</b>	<b>6HP19TU</b>	4/06 335i/xi (E90) 9/06 328i/xi-335i/xi (E92) 12/06 335i (E93) 3/07 528i/xi-535i/xi (E60/E61) 1/08 135is Coupe (E82) 1/08 135is Convertible (E88) 10/06 X5 3.0si (E70) 1/08 X6 XDrive35i 3.0 (E71)	N54 N52K/N54 N54 N52K/N54 N54 N54 N52K N54



<b>GM Hydrumatic</b>			
<b>Transmission BMW ID #</b>	<b>Manufacturer ID</b>	<b>Model/Year</b>	<b>Engine</b>
<b>A4S310R (THM-R1)</b>	<b>4L30- E(A4S310R)</b>	90-92 525i (E34) 93-95 525i (E34) 92 325i,is,ic (E36) 93-95 325i,is,ic (E36) 92-95 318ti (E36)	M50 M50 TU M50 M50 TU M42
<b>A4S270R</b>	<b>4L30- E(A4S270R)</b>	96-98 328i (is,ic -97) 96-98 318i (is,ic-97) 96-98 318ti (E36/5) 96-98 Z3 1.9 (E36/7) 96-98 Z3 2.8 97-98 528i (E39)	M52 M44 M44 M44 M52 M52
<b>A5S360R (GM5)</b>	<b>5L40-E (A5S360R)</b>	99-00 323i/Ci (7/98-3/00) 99-00 328i/Ci (6/98-5/00) 99-00 528i (E39) 9/99-8/00 99-00 Z3 (E36/7) 2.3/2.8	M52 TU M52 TU M52 TU M52 TU
<b>A5S390R (GM5)</b>	<b>5L40-E (A5S390R)</b>	00-8/06 X5 3.0i (4/00) 01 325iT (8/00-3/01) 01-3/05 325xi/xiT & 330Xi (-8/00) 01-6/06 325Ci/Cic/330Ci/Cic 01 525i/iT (9/00-3/01) 01 530i (9/00-3/01)  01-02 Z3 2.5/3.0 (6/00) 03-8/06 X3 2.5/3.0 (E83)	M54 M54 M54 M54 M54 M54  M54 M54
<b>6L46R (GM6)</b>	<b>6 Speed Hydra-Matic</b>	9/06 328i/xi/C/Cxi (E90/91/92) 12/06 328Cic (E93) 1/08 128is Coupe (E82) 1/08 128is Convertible (E88) 9/06 X3 3.0si (E83)	N52K/N51 N52K/N51 N52K/N51 N52K/N51 N52K

## Manual Transmissions

The following table lists the manual transmissions and the vehicles they are used in.

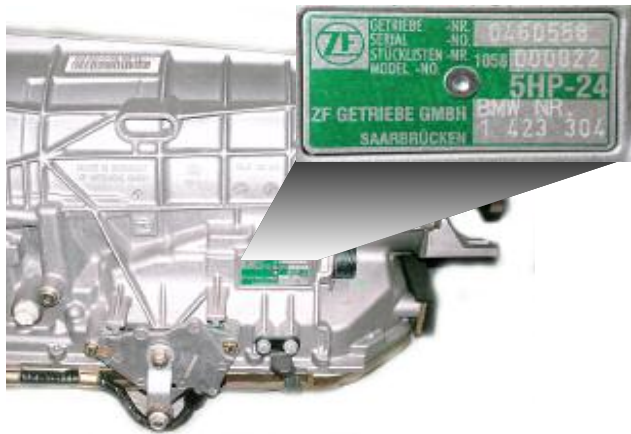
Transmission Model	Vehicles	Engine	Model Year
<b>S5D 200G</b>	318i/iC (E36)	M42	1992 - 1995
<b>S5D 250G</b>	318ti (E36/5) 318i/iC (E36) 325i/iC (E36) 323i (E46)	M42, M44 M44 M50TU M52TU	1995 - 1999 1996 1992 - 1995 1999 -
<b>S5D 280Z</b>	X5 3.0i (E53) 325xi (E46/16) 330xi (E46/16)	M54 M54 M54	2001 - 2001 - 2001 -
<b>S5D 310Z</b>	M3 (E36) 525i (E34) 530i (E34)	S50 M50TU M60	1995 1991 - 1995 1994 - 1995
<b>S5D 320Z</b>	323i/iC, 328i/iC (E36) M3 (E36) Z3 roadster/Coupe M roadster/Coupe 528i (E39) 328i (E46)	M52 S52 M52TU S52 M52TU M52TU	1996 - 1999 1996 - 1999 1997 - 1998 - 1997 - 1999 -
<b>S6S 420G</b>	M3 (E46) 540i (E34) 540i (E39) M5 (E39) Z8 (E52)	S54 M60 M62TU S62 S62	2001 - 1994 - 1995 1997 - 2000 - 2001 -
<b>S6S 560G</b>	850i/Ci 850Csi	M70, M73 S70	1991 - 1997 1994 - 1995

## Transmission Data Plate

In order to identify BMW transmissions there are identification tags located externally on the transmission case. The tag contains information such as Manufacturer, Serial number, transmission type etc. This information is needed when ordering parts, referencing bulletins, or submitting a PuMA case.

### ZF Tag Location

- Right hand side (passenger side) of transmission case. (5HP30 and 5HP18)
- Left hand side (drivers side) of transmission case. (6HP26Z, 5HP24, and all 4HP)
- Rear under output shaft. (5HP19)



ID Tag Location 5HP24



ID Tag Location 5HP19

### GM Tag Location

- Left hand side (drivers side) of transmission case.



GM ID Tag (GM 5)

# BMW Group Numbering System

BMW uses a group numbering system to aid internal and BMW Center personnel to identify vehicle components or BMW information resources.

The main group numbering system is made of two digits at the beginning of any BMW group number. The following information resources are all organized by the group numbering system.

- Part Numbers
- Service Information Bulletins
- Repair Manuals
- Tightening Torques
- Electrical Troubleshooting Manuals
- Warranty Labor and Defect codes
- Technical Reference Information
- Technical Data
- Special Tool Catalog
- Diagnosis Program Test Modules

Group	Description	Group	Description
0	Maintenance and General Hints	33	Rear Axle
1	Warranty	34	Brakes
2	Aftersales Development	35	Pedals
3	Technical Training	36	Wheels and Tires
4	Tools and Equipment	37	Special Suspension Systems
5	Information Systems	41	Body
6	Service Roundtable	51	Body Equipment
7	Workshop Environment Systems	52	Seats
8	GT1	54	Special Roofs
9	Programming/Coding Explanations	61	General Electrical Systems
10	TIS	62	Instruments
11	Engine	63	Lights
12	Engine Electrical Systems	64	Heating & Air Conditioning
13	Fuel Systems	65	Audio, Navigation, Monitors, Alarms, SRS
16	Fuel Supply Systems	66	Distance Systems, Cruise and Remote Control
17	Cooling System	67	Electric drives
18	Exhaust Systems	71	Tools and Accessories (Engine-Chassis)
21	Clutch	72	Safety Belts and Accessories (Body)
22	Engine and gearbox suspension	80	Bicycles/Bicycle Accessories
23	Manual Transmission	81	Books, Calendars and Collectibles
24	Automatic Transmission	82	Lifestyle and Gift Items
25	Gear Shift Mechanism	84	Communication Systems
26	Drive Shaft	91	Individual Equipment
27	Intermediate and Special Transmission	97	Corrosion Protection
28	M Double-clutch Transmission w/Drivelogic	98	Paints and Car Care Products
31	Front Axle	99	Paintwork
32	Steering and Wheel Alignment		

# BMW Abbreviations and Acronyms

Throughout your career as a BMW Group Service Technician you will come across many acronyms in the various Technical publications. Even BMW is an acronym. An acronym is a word formed from the initial letters of a longer word. In the next two pages there is a list of acronyms describing various systems on BMW Group automobiles and SAVs.

Remember this is only a partial list. The BMW Group is a dynamic company and is always adding new systems to its products. Look for new systems and acronyms with new Technical Training courses, Service Information, and Technical Information Bulletins.

A	Processed Vehicle Speed	DKI	Throttle Position
AB	Airbag	DME	Digital Motor Electronics
ABS	Anti-lock Braking System	DM-TL	Diagnosis Module Tank Leakage
ADS	Engine Intake Air Control	DSC	Dynamic Stability Control
ADV	W/wiper Pressure Control	DSP	Digital Sound Processing
AGS	Adaptive Transmission Control	DTC	Diagnostic Trouble Code
AIC	Automatic Interval Control (rain sensor)	DWA	Theft Deterrent System
ARS	Active Roll Stabilization	DWS	Tire Pressure Warning System
ASC	All Season Traction	EBV	Electronic Brake Proportioning
ASC+T	ASC+Traction	E-KAT	Electrically Heated Catalytic Converter
ASK	Audio System Controller	ECM	Engine control module (SAE)
AST	Slip Control (Marketing term)	EDC	Electronic Dampening Control
AUC	Automatic Air Recirculation	EDK	Electronic Throttle Valve
B	Benzene (gasoline)	EGS	Electronic Transmission Control
BC	Board Computer	EH	Electronic Hydraulic
BC1	Body Controller 1	EHC	Electronic Height Control
BLS	Brake Light Switch	EKM	Electronic Body Module
BMBT	Board Monitor	EKP	Electronic Fuel Pump
BS	Block Diagram	ELV	Electronic Steering Lock
BST	Battery Safety Terminal	EM	Electro-Mechanical
BZM	Center Console Control Center	EMF	Electro-Mechanical Emergency Brake
CAS	Car Activation System	EML	Electronic Motor Load Regulation
CBC	Corner Braking Control	EO	Component Location
CAN-Bus	Controller Area Network(bus)	EPC	Electronic Parts Catalog
CCM	Check Control Module	ETM	Electronic Troubleshooting Manual
CIM	Chassis Integration Module	EWS	Electronic Driveaway Protection
CVM	Convertible Top Module	FB	Function Description
CVT	Constantly Variable Trans.	FBZV	Radio Frequency Locking
D-Bus	Diagnosis Bus (same as TXD)	FRU	Flat Rate Unit
DBC	Dynamic Brake Control	GAL	Speed Dependent Volume
DCS	Dealer Communication System	GM	General Module
DDE	Digital Diesel Electronics	GMR	Yaw Moment Control
DIN	German Industrial Standards	GRII	Cruise Control
DIS	Diagnosis and Information System	GPS	Global Positioning System
DISA	Differential Air Intake Control	HDC	Hill Decent Control
DK	Throttle Housing	HFM	Hot Film Air Mass Meter

---

IB	Interior lighting Control Signal	RDW	Tire Pressure Warning
I-Bus	Information Bus	RM	Relay Module
IHKA	Automatic Heating and A/C	RPS	Rollover Protection System
IHKR	Regulated Heating and A/C	RPW	Tire Puncture Warning
IHKS	Standard Heating and A/C	RXD	Wake-up Diagnosis Line
IKE	Instrument Cluster Electronics	RZV	Direct Stationary Ignition
IR	Infrared	SB	Fuse Assignments
ISIS	Intelligent Safety Integration System	SBE	Seat Occupancy Detector
ISN	Individual Serial Number	SCA	Soft Close Actuator
KAT	Catalytic Converter	SG	Control Unit
KATON	Converter Heating (signal)	SGS	Seat Integrated Belt System
K-Bus	Body Bus	SHD	Sunroof Module
KL	Terminal Designation	SII	Service Interval Indicator
KO	Compressor "ON" Signal	SM	Seat Module
KOMBI	Instrument Cluster	SP	Schematic
KOREL	Compressor Relay Signal	ST	Connector Views
KW	Crankshaft	SZM	Central Switch Center Module
LCM	Lamp Check Module	TD	Engine Speed
LDP	Leak Diagnosis Pump	ti	Injector on time
LEV	Low Emissions Vehicle	TL	Part Throttle
LKM	Lamp Control Module	TLEV	Transitional Low Emission Vehicle
LL	Closed Throttle	TRS	Battery Isolation Switch
LRA	Vertical Headlight Aiming	TSH	Door Lock Heating
LSM	Steering Column Memory	TU	Technical Update
LSZ	Lamp Switching Center	TXD	Transmitting Diagnosis Line
LVA	Air Supply System	VANOS	Variable Camshaft Timing
LWR	Vertical Headlight Aiming	VL	Full load - wide open throttle
LWS 5	Steering Angle Sensor	WK	Converter Lock-up Clutch
MBC	Maximum Brake Control	ZAE	Central Airbag Electronics
MDK	Motorized Throttle Valve	ZGM	Central Gateway Module
MFL	Multi-Function Steering Wheel	ZKE	Central Body Electronics
MFC	Multi-Function Controller	ZV	Central Locking System
MID	Multi-Information Display	ZVM	Central Locking Module
MoDiC	Mobile Diagnostic Computer	ZWD	Idle Control Valve
MRS	Multiple Restraint System		
MSR	Engine Drag Torque Reduction		
NG	New Generation		
OBC	On-Board Computer		
OBD	On-Board Diagnosis (SAE)		
PB	Pin Assignments		
P-Bus	Periphery Bus		
PDC	Park Distance Control		
PWG	Pedal Position Sensor		
RDC	Tire Pressure Control		

---

NOTES

PAGE